

Torch Lake Township



2014-2018 Recreation Plan



Prepared for: Torch Lake Township, 52235 Duncan Avenue, Hubbell, MI 49934

Prepared by: Western Upper Peninsula Planning & Development Region,
393 East Lakeshore Drive, P.O. Box 365, Houghton, MI 49931



Table of Contents

| Part | Page |
|---|-------------|
| Part 1: Community Description | 4 |
| Location | 4 |
| Population Characteristics | 4 |
| Employment Trends | 7 |
| Transportation | 7 |
| Land Use | 7 |
| Natural Features | 9 |
| Soils and Vegetation | 9 |
| Climate | 9 |
| Part 2: Administrative Structure | 10 |
| Part 3: Recreation Inventory | 11 |
| Township-Owned Sites | 11 |
| Other Sites Within Township | 13 |
| Regional Facilities | 13 |
| Universal Design | 15 |
| Part 4: Planning Process | 16 |
| Part 5: Goals, Objectives, and Needs | 17 |
| Part 6: Action Program | 18 |
| Part 7: Funding Sources | 19 |
| Appendix | 20 |
| A. "Ernie" Poisson Memorial Park Site Plan | |
| B. Survey Press Release | |
| C. Survey Print Copy | |
| D. Survey Results Summary | |
| E. Public Review Press Release | |
| F. Public Notice Affidavit | |
| G. Public Hearing Minutes | |
| H. Adoption Resolution | |

Table of Figures

| Figure | | Page |
|---------------|----------------------|-------------|
| Figure 1.1: | Location Map | 5 |
| Figure 1.2: | Land Use Map | 8 |
| Figure 2.1: | Organizational Chart | 10 |
| Figure 3.1: | Recreation Sites Map | 14 |

Table of Tables

| Table | | Page |
|--------------|--|-------------|
| Table 1.1: | Basic Demographics | 4 |
| Table 1.2: | Household and Housing Characteristics | 6 |
| Table 1.3: | Poverty and Income | 6 |
| Table 1.4: | Educational Attainment (Highest Level) | 7 |
| Table 6.1: | Action Plan | 18 |
| Table 7.1: | Potential Funding Sources | 19 |

PART 1: COMMUNITY DESCRIPTION

Location

Torch Lake Township is located in the northeastern part of Houghton County (see **Figure 1.1**). The majority of the township is bordered by the water bodies of Lake Superior, the Keweenaw Waterway, and Torch Lake. The remainder of the township is bordered by the Village of Lake Linden and Schoolcraft Township to the north and Osceola Township to the west.

Population Characteristics

Torch Lake Township's population is 1,880 as of 2010, which is virtually the same as its 1,860 in 2000. These totals are a significant increase from the 1,553 residents in 1990. Approximately one-half of residents live in the community of Hubbell located on the northwest side of Torch Lake. Seasonal township residents increase the population by approximately twofold in summer, reflecting a special need for summer recreation facilities.

Age is an important factor in planning for recreation facilities and opportunities. The township has a disproportionately high number of senior citizens, with 24.3 percent of residents 65 years and older versus 13.8 percent in Michigan overall. The township also has lower percentages of residents under 5 years and under 18 years than the state overall. Special consideration needs to be given to the 18 percent of township residents who have a disability. See **Table 1.1**. Torch Lake Township's median age is 50.3 years versus 38.9 years for the state.

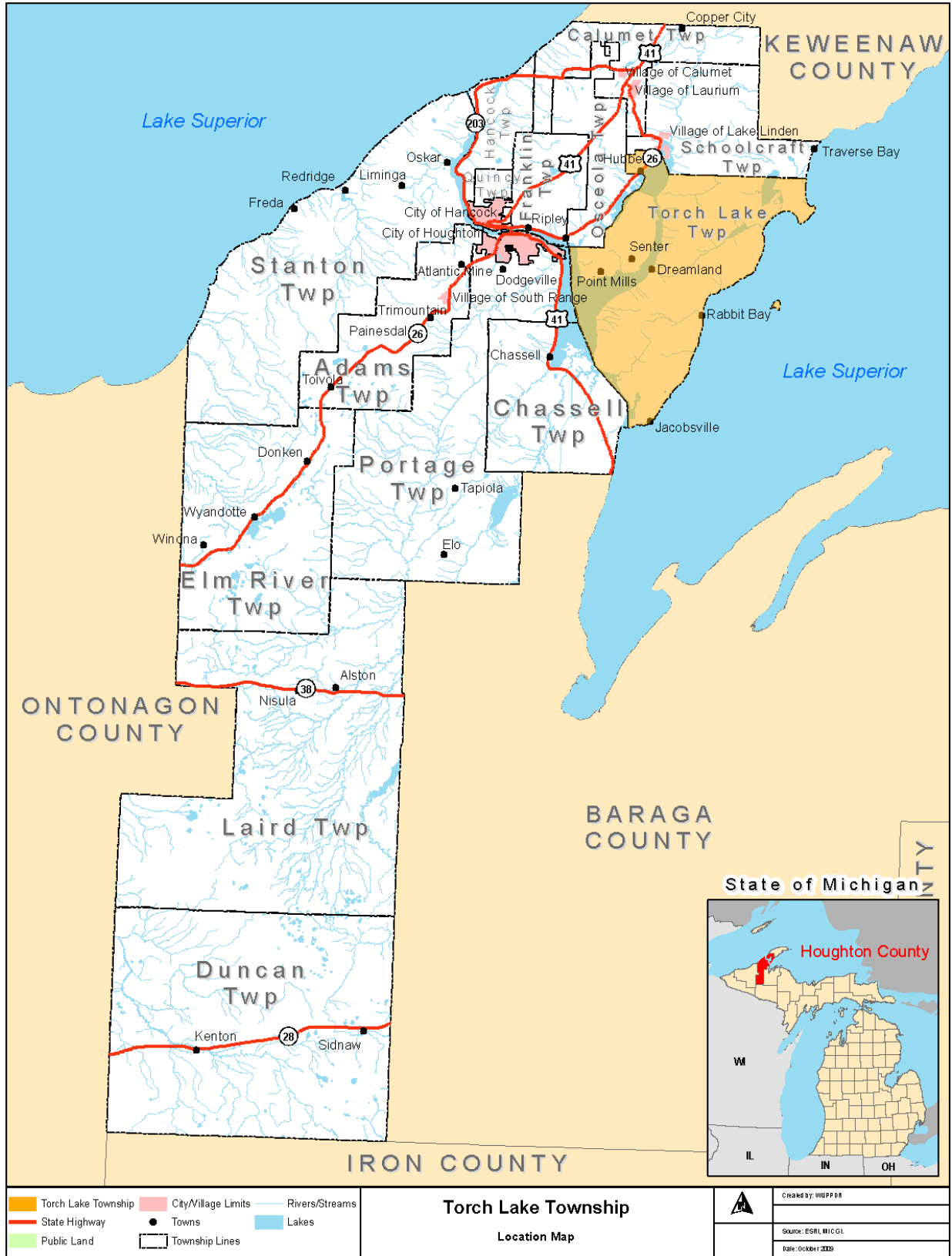
Table 1.1. Basic Demographics

| Age Group | Population | Percentage of Total | |
|-------------------|---------------------|---------------------|----------|
| | Torch Lake Township | Torch Lake Township | Michigan |
| Under 5 years | 78 | 4.1 | 6.0 |
| 5-19 years | 310 | 16.5 | 20.8 |
| 20 to 34 years | 222 | 11.8 | 18.6 |
| 35 to 49 years | 320 | 17.0 | 20.4 |
| 50 to 64 years | 494 | 26.3 | 20.4 |
| 65 to 84 years | 401 | 21.3 | 11.8 |
| 85 years and over | 55 | 2.9 | 1.9 |
| Total | 1,880 | | |
| Under 18 | 358 | 19.0 | 23.7 |
| With Disability | 327 | 18.0 | |
| Male | 958 | 51.0 | 49.1 |
| Female | 922 | 49.0 | 50.9 |

Source: 2010 Census

Household composition can impact demand for different types of recreation facilities in the community. Torch Lake Township has a greater proportion of family households than the state but a lesser proportion of households with their own children under 18. Families, especially those with young children, tend to utilize community recreation facilities most heavily.

Figure 1.1. Location Map



The predominance of seasonal residents is indicated by the housing supply: Housing for seasonal, recreational, or occasional use comprises 44.6 percent of all housing units. See **Table 1.2**.

Table 1.2. Household and Housing Characteristics

| | Number | Percentage of All Households/Units | |
|---|---------------------|------------------------------------|----------|
| | Torch Lake Township | Torch Lake Township | Michigan |
| All households | 771 | | |
| Family households | 550 | 71.3 | 66.3 |
| With own children under 18 | 151 | 19.6 | 29.3 |
| Nonfamily households | 221 | 28.7 | 33.7 |
| Householder living alone | 168 | 21.8 | 28.4 |
| 65 years and over | 66 | 8.6 | 10.1 |
| Average household size | 2.33 | | |
| Average family size | 2.70 | | |
| All housing units | 1,557 | | |
| Occupied | 790 | 50.7 | |
| Vacant | 767 | 49.3 | |
| For seasonal, recreational, or occasional use | 694 | 44.6 | |

Households Source: 2008-2012 American Community Survey; Housing Source: 2010 Census

Persons in poverty and those with relatively low incomes rely on public recreation facilities due to a lower ability to afford other opportunities. Torch Lake Township has a higher level of poverty than the state, especially among children, and also has lower household and per capita incomes. See **Table 1.3**.

Table 1.3. Poverty and Income

| | Torch Lake Township | Michigan |
|---------------------------------|---------------------|----------|
| % in Poverty, all ages | 19.0 | 15.7 |
| % in Poverty, under 18 years | 35.2 | 21.8 |
| % in Poverty, 65 years and over | 9.5 | 8.1 |
| Median household income | \$40,764 | \$48,669 |
| Per capita income | \$24,093 | \$25,482 |

Source: 2008-2012 American Community Survey

Torch Lake Township residents' level of educational attainment is on par with the state though slightly moderated at the extremes. The township has fewer residents than the state with a less-than-9th-grade education but also fewer with a graduate or professional degree. See **Table 1.4**.

Table 1.4. Educational Attainment (Highest Level)

| | Number | Percentage | |
|---|---------------------|---------------------|----------|
| | Torch Lake Township | Torch Lake Township | Michigan |
| Population 25 years and over | 1,372 | | |
| Less than 9 th grade | 22 | 1.6 | 3.5 |
| 9 th to 12 th grade | 130 | 9.5 | 8.1 |
| High school graduate or equivalent | 472 | 34.4 | 31.1 |
| Some college, no degree | 356 | 25.9 | 23.8 |
| Associate's degree | 130 | 9.5 | 8.2 |
| Bachelor's degree | 169 | 12.3 | 15.6 |
| Graduate or professional degree | 93 | 6.8 | 9.7 |

Source: 2008-2012 American Community Survey

Employment Trends

Historically, Hubbell has been the economic center of the township as an important mining community with mills and docks for export. Mining activity ceased in 1968. Peninsula Copper Industries (owned by Osmose), at its facility in the township, is the only company in the area that still manufactures copper products. Osmose is the township's largest taxpayer and employer. Our Lady of Mercy Convalescent Home, located two blocks from the Hubbell Park, is another major employer in the community.

The two area hospitals, Michigan Technological University, and associated retail and service industries provide the bulk of the area's employment, tourism, shopping, and entertainment attractions. Michigan Tech and the greatest concentration of retail and dining establishments are located in Houghton. The two hospitals, Portage Health and Aspirus Keweenaw, are located in Hancock and Laurium, respectively.

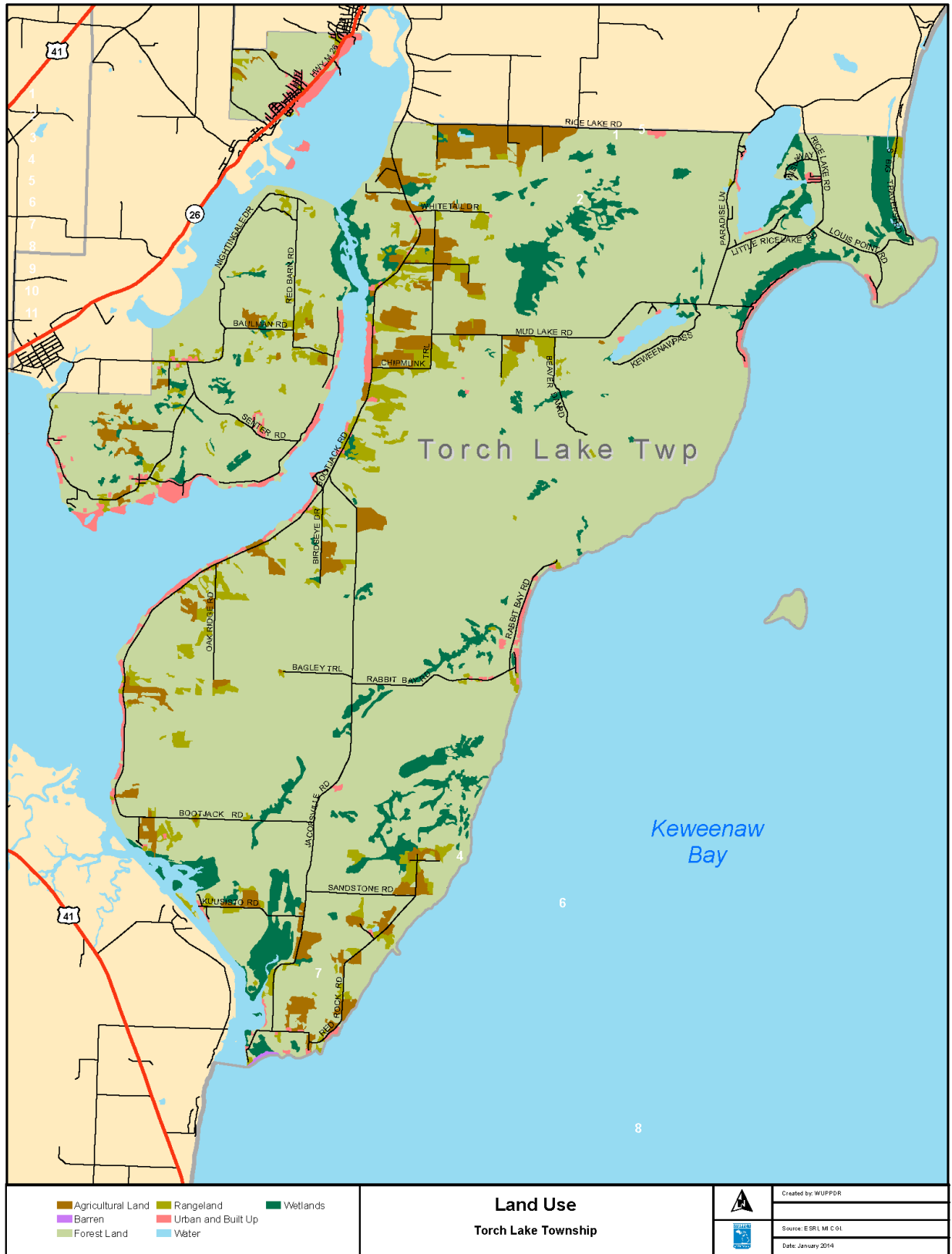
Transportation

Torch Lake Township has a diverse geographic area, separated into three distinct land masses. The primary trunk line, Highway M-26, connects Hubbell with Hancock to the south and Calumet to the north, both of which are located along Highway U.S. 41. Houghton County Road 641, also known as Bootjack Road, is the main thoroughfare for the southern portion of the township. Smaller county roads network the remaining portion of the township.

Land Use

The township is primarily rural, consisting of private residential waterfront and timbered properties (see **Figure 1.2**). The community of Hubbell is the main population center in the Township and contains varied land uses including residential, commercial, and industrial areas. Recent land use trends include continuing development of prime waterfront property into private homes and seasonal dwellings. Former stamp sands in mining tailings areas are also being transformed by covering with soils and vegetation. These areas compose the federal Torch Lake Superfund site. The site includes 15 locations that are being deleted from the Superfund National Priorities List in stages as remediation occurs.

Figure 1.2. Land Use Map



Natural Features

The general terrain of Torch Lake Township is rolling woodlands. More notable are the township's water bodies. Township boundaries pass through Torch Lake, with the major portion of water being in Torch Lake Township. Torch Lake is 6 miles long and 1.5 miles wide, with a maximum depth of 125 feet. Its outlet connects with Bootjack Bay, an arm of Portage Lake.

Portage Lake is connected to Lake Superior and Keweenaw Bay via the Keweenaw Waterway, which is maintained by the U.S. Army Corps of Engineers and provides access to the Great Lakes and ocean-going vessels. The Keweenaw Waterway and its lakes and bays provide refuge for large ships and small boats during stormy weather on Lake Superior.

Aside from being an area of refuge with commercial importance, these waters are also a vast recreational asset. Fishing on both open water and ice is excellent for many species, particularly walleye. The waters are also heavily used for recreational boating and waterskiing, kayaking, and swimming. Torch Lake and the Keweenaw Waterway are sheltered from Lake Superior's waves and cold waters.

Torch Lake Township, composed predominantly of woods and farmland, provides a natural habitat for a variety of land animals and birds, including bald eagles. Fish are abundant in Torch Lake, and, in addition to walleye, include northern pike, smallmouth bass, perch, and lake trout.

Soils and Vegetation

Torch Lake Township is generally an area of good internal drainage, except for Hubbell, which occasionally experiences some urban flooding from waters generated in other municipalities in Osceola Township to the west. Affected communities are exploring remedies to address this situation.

The natural vegetation of Torch Lake Township is primarily a mixture of northern hardwoods, softwoods, some wild grasses, and rolling farmland. In the more densely populated community of Hubbell, planted trees, shrubs, and greenery give way to an area of mine tailings being remediated. This landscaping was completed with funding from the U.S. Environmental Protection Agency.

Climate

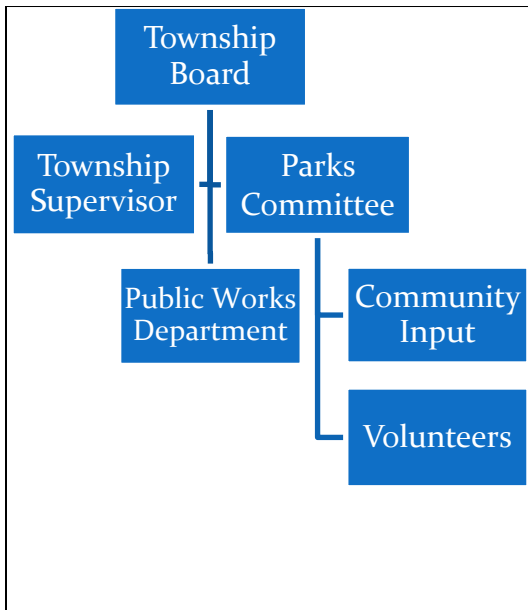
The climate of the area can be characterized as having four distinct seasons that provide a variety of recreational activities. Summers are mild, with average temperatures in the hottest month of July reaching 65 degrees Fahrenheit. Average temperatures in the coldest month of January are about 15 degrees Fahrenheit. Total annual precipitation averages 35 liquid inches, which includes about 140 inches of snow. Prevailing winds are southerly during warm weather and northwesterly for the remainder of the year.

The township's proximity to Lake Superior results in moderate temperatures and an unusually large amount of winter snowfall brought over the area by northwest winds. The area experiences freezing temperatures beginning in early October. The last freezing temperatures occur in the middle of May. The growing season is approximately 120 days.

PART 2: ADMINISTRATIVE STRUCTURE

The Parks Committee is responsible to the Township Board. All members serve on a volunteer basis. The committee's function is to determine the needs of the community and then recommend them to the Township Board for financing. Financing through grants is a major and necessary part of implementation of the Recreation Plan. The Township contributes a portion (approximately \$5,000) of its fund balance every year for parks. A portion of the committee's money is also raised through projects, raffles, and other fundraisers. The committee's ability to incorporate in-kind services to help match grant monies is an anticipated source of funding in the foreseeable future. Park maintenance is by a single township employee, volunteer labor, and the commitment of the Township Board. See **Figure 2.1.**

Figure 2.1. Organizational Chart



PART 3: RECREATION INVENTORY

Township-Owned Sites (see Figure 3.1)

"Ernie" Poisson Memorial Park is a community park located in Hubbell. The park also serves surrounding populated areas of the township. The park is 7.3 acres in area. Facilities are described below. For a site plan, though not entirely up to date, see **Appendix A**.



- Boat Launch and Dock Site: This site was developed in 1996 by transforming the remains of an old launch site into

an attractive and much-utilized boat launch. Approximately 80 feet of dock exists with three floating piers to provide mooring for several boats of small to medium size. The area also contains several picnic shelters and swings for community or boat users. Access to the launch site has been improved with the addition of gravel and is also lighted for the safety of nighttime boat launch users. Shade trees have been planted to enhance the aesthetics.

This site received a DNR Trust Fund grant (**Hubbell Launch Site**, project number **TF88-188**) in the amount of \$22,500 in 1988 to acquire approximately two acres with 450 feet of frontage on Torch Lake. The site is still publicly owned and actively used for the original purpose.



- Beach Area: Constructed in 1999, the site offers a 50-foot by 75-foot area for beachgoers to relax and enjoy the sands. Swimming is possible in Torch Lake, although the swim area is confined to a small area of shallow water before a steep drop-off. The swim area is roped off for the public's safety. Picnic tables and newly planted shade trees surround the beach area.

- Community Area: A pavilion provides space for small community gatherings. A six-seat swing set along with portable horseshoe pits round out the community area in addition to open space for games of catch, tag, or Frisbee. Currently there is no playground equipment other than the swing set.

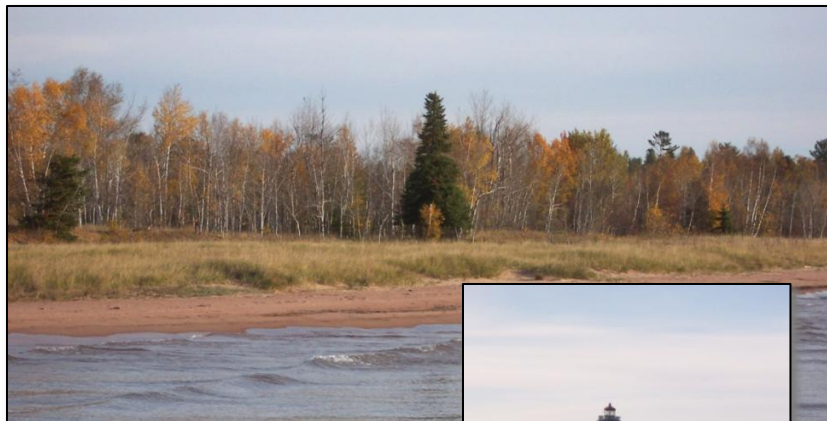


- Portable Toilet Facilities: These are an economical means of providing facilities compared to full sanitary toilets.
- Space is also available for potential additional recreation facilities such as basketball courts, ice rink(s), nature trails, and a campground.
- **Accessibility rating: 3** – Most of the park facilities/park areas meet accessibility guidelines.

The boat launch and docks are at ground level. Floating pier extensions are ramped to provide access to persons with disabilities. The floating piers are constructed in a way that does not provide stability when motion is created by waves or by individuals walking.

The beach area is at ground level and has no impediments. Free-standing picnic tables do not provide for wheelchair access. The pavilion is accessible at ground level with cement flooring. The two covered picnic tables in the park area do not offer access for wheelchair individuals. Portable toilets offered at the facility are not handicapped-accessible.

White City Park is a rural recreation area that is attractive to users throughout Northern Houghton County because of the access afforded to the Portage Waterway at Lake Superior. Exact park area is not known. Facilities are described below.

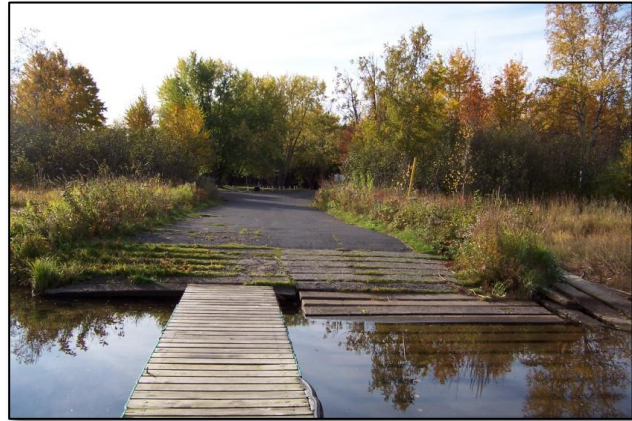


- Beach Area: This approximately three-acre site is owned by the U.S. Army Corps of Engineers and is operated as a park by the township. This sandy beach on the shore of Lake Superior is located at the south entry to the Keweenaw Waterway. The Federal Government maintains a pier, lighthouse, and foghorn. Small to medium-size pleasure craft dock at the pier typically for daytime visits. The mooring facilities are not conducive to extended docking because of considerable boat wake and wave action of Lake Superior.
- Recreation Area: Swings, picnic shelters, and barbecue grills are offered in this well-utilized summer facility. Portable toilets are also



available. Park visitors frequently utilize more property than is under ownership at the park. Adjacent property owners have been extremely tolerant of this activity in the past, but the potential development of those properties could lead to reduced space for park visitors.

- **Portable Toilet Facilities:** These are an economical means of providing facilities of this nature currently as compared to full sanitary toilets.
- **Boat Launch:** Approximately one-quarter-mile from the beach area is a boat launch owned by the township. This facility has been operated and maintained by the township for many years. Adequate parking is available on an asphalt surface. This facility is well utilized.



- **Accessibility rating: 2** – Some of the facilities/park areas meet accessibility guidelines. The picnic area, swing set, and barbeque grills are located at ground level. The beach is also at ground level, but the terrain is quite sandy. None of the picnic tables offer wheelchair access. Portable toilets are not handicapped-accessible.

Other Sites Within Township (see Figure 3.1)

Boat Launches: Two Michigan DNR boat launch sites are located within the township and include one at Rice Lake and one on Torch Lake near Bootjack.

Lake Linden – Hubbell School Forest: The school district owns this 400-acre forested lot located off Bootjack Road five miles south of Lake Linden. The forest includes several hiking and cross-country ski trails. The site also has a log cabin, archery range, fire pit area, and network of geocache sites.

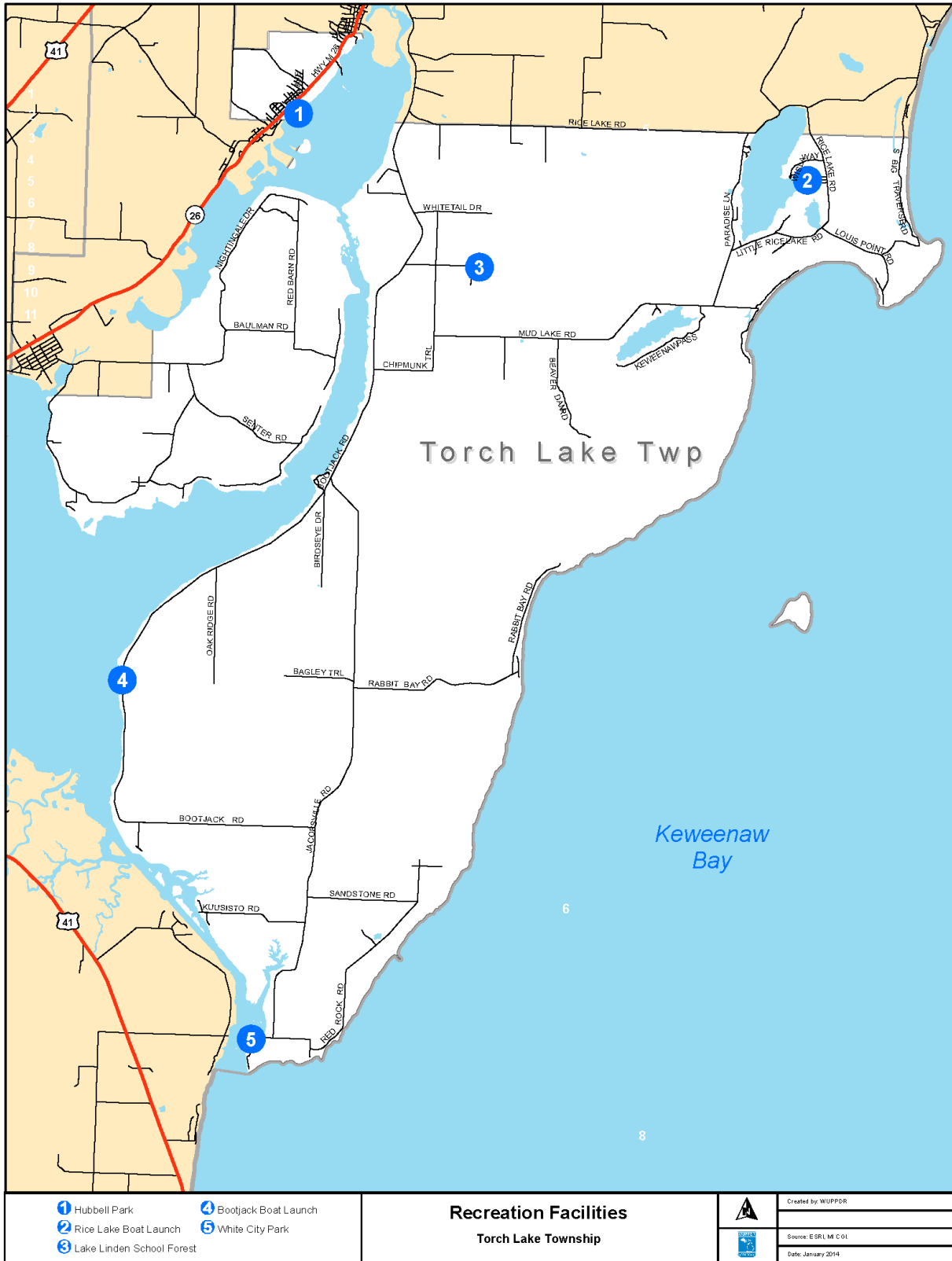
Regional Facilities

The Village of Lake Linden is located two miles north of the Hubbell area and operates a park that includes a playground, boat launch, beach area, campground, and recreational trail. The village also has a playground (the "Boneyard") on the north edge of town. The Lake Linden – Hubbell Public Schools playground is also located approximately two miles away.

Schoolcraft Township developed a park on the shore of Lake Superior in the Big Traverse area. This site is located approximately 12 miles from Hubbell and 20 miles from the White City location.

Osceola Township operates a park known as Sandy Bottom that includes a beach area, boat launch, and picnic area approximately six miles from Hubbell.

Figure 3.1. Recreation Sites Map



Universal Design

New recreation facilities and those undergoing improvements should consider the principles of universal design. Universal design is a principle to accommodate the needs of all users, including those who require barrier-free and other types of special accommodations to access recreation facilities. The following components should be taken into account and implemented to the extent possible:

1. **Equitable Use:** The design is useful and marketable to any group of users.
2. **Flexibility in Use:** The design accommodates a wide range of individual preferences and abilities.
3. **Simple and Intuitive Use:** Use of the design is easy to understand.
4. **Perceptible Information:** The design communicates necessary information effectively to the user.
5. **Tolerance for Error:** The design minimizes hazards and the adverse consequences of accidental or unintentional actions.
6. **Low Physical Effort:** The design can be used efficiently and comfortably.
7. **Size and Space for Approach and Use:** Appropriate size and space is provided for approach and use.

PART 4: PLANNING PROCESS

Plan development began in January 2014 with a meeting of Torch Lake Township officials. The meeting included a review of projects in the previous (2008) Recreation Plan and updates as needed for the action program now proposed. Refined goals and objectives were also established. Topics and questions for a public opinion survey were also developed, with the survey to be released and publicized shortly thereafter.

The online survey was launched on January 6, 2014, a press release (**Appendix B**) was made, and links to the survey were posted at www.wuppd.org and www.torchlaketownship.com. Print copies (**Appendix C**) were available at the Hubbell Community Center (township government building). Availability of the survey was announced and publicized online by a major local radio station. The survey was kept open until January 20, and responses were received from both residents and non-residents of the township. (See **Appendix D** for a summary.) The survey indicated particular interest in non-motorized trail activities and water-based activities. Some of the largest projects in the following Action Plan are consistent with these priorities.

After review of the survey results and plan draft, and following a January 21, 2014 press release (**Appendix E**), the draft was released on January 24 for public review online at www.wuppd.org and in print at the Hubbell Post Office. Written comments were accepted until February 25. No comments were received.

A special meeting of the Torch Lake Township Board was held on February 26 to accept final public comments and vote on adoption of the plan. No comments were received, and the plan was adopted. Notice of the meeting was printed in the Houghton Daily Mining Gazette on February 18, 2014 (see **Appendix F** for affidavit). See **Appendix G** for minutes from the hearing. See **Appendix H** for the adoption resolution.

PART 5: GOALS, OBJECTIVES, AND NEEDS

The goals of the Torch Lake Township Parks Committee are outlined in the outer bullet points below, with the narrower, more functional objectives in the inner bullet points:

- Increase community involvement in current and future recreation programs
 - Utilize volunteers in operations and construction to the extent possible in lieu of external or local public funding
 - Allow use of recreation facilities at low or no cost for public recreational activities and community events
- Promote healthy lifestyles and attitudes towards community recreation programs
 - Educate school students and other community members about the benefits of outdoor recreation versus sedentary indoor entertainment
- Support projects that are attractive and easily accessible to residents and visitors
 - Construct new and modify existing sites/facilities in accordance with Universal Design guidelines
 - Place low-impact facilities, such as playgrounds, within residential neighborhoods to the extent feasible
 - Highly prioritize design, development, and maintenance of signage and landscaping
 - Limit hours of operation of facilities adjacent to residential areas
- Capitalize on recreation facilities and natural resources to promote tourism and economic development
 - Emphasize outdoor recreation and the natural environment in local or countywide branding/promotional campaigns
 - Cater facilities to the desires of visitors rather than only resident needs
 - Establish and maintain recreational multi-modal transportation connectivity with the larger region
- Identify and explore multiple internal and external funding sources to finance recreation projects
 - Stay apprised of changing DNR funding opportunities and priorities
 - Work creatively with the community and local government to set aside money or in-kind contributions to fulfill local match requirements

Township recreational facilities provide a variety of opportunities and are generally in good repair. "Ernie" Poisson Memorial Park in Hubbell receives particularly high use due to its role as a center of activity in the community. There are significant long-term plans for expansion, including a possible campground.

Potential short-term projects at Memorial Park range from such simple amenities as barbeque grills to larger undertakings like an upgraded boat dock. White City Park would also benefit from minor upgrades. In general, the needs are illustrated by the solutions proposed in the following Action Program.

The following Action Program focuses on low-impact improvements to township facilities, but any opportunity to expand offerings to residents will be considered on a case-by-case basis.

PART 6: ACTION PROGRAM

Consistent with township objectives and needs, **Table 6.1** outlines and prioritizes capital improvements projects for township recreation facilities that may be undertaken in the next five years.

Table 6.1. Action Plan

| Project | Location | Est. Cost | Funding* |
|---|-----------------|-----------------------|-----------------------------|
| 2014 | | | |
| Post and rope off | Memorial Park | \$1,000 (in progress) | Local |
| Construct concrete walkway to pavilion – increase accessibility | Memorial Park | \$3,500 (in progress) | Local |
| New highway & park signage | Memorial Park | \$2,000 (in progress) | Local |
| Additional new signage | Memorial Park | \$1,000 | Local |
| Define parking areas and restrict vehicular access to beach & playground (construct barriers) | Memorial Park | \$7,500 | Passport, Local |
| Purchase and install additional barbecue grills | Memorial Park | \$2,500 | Local |
| 2015 | | | |
| Signage for trailer parking | Memorial Park | \$300 | Local |
| Add & replace playground equipment | Memorial Park | \$30,000 | Passport, NRTF, LWCF, Local |
| Define parking areas and restrict vehicular access to beach & playground (construct barriers) | White City Park | \$15,000 | Passport, NRTF, Local |
| Add general advisory signage | White City Park | \$5,000 | Local |
| Reinforce dock & perform ongoing maintenance | Memorial Park | \$25,000 | Local |
| 2016 | | | |
| Construct gazebo around portable toilets | Memorial Park | \$4,000 | Local |
| Construct canopied accessible picnic tables | Memorial Park | \$4,000 | Local |
| Plumbing projects: Irrigation system with pump from lake; water line from refuse garage | Memorial Park | \$7,500 | Passport, Local |
| Repair concrete launch pads and timber crib dock | White City Park | \$15,000 | Local |
| Add playground equipment | White City Park | \$20,000 | Passport, NRTF |
| 2017 | | | |
| Construct and install benches on docks | Memorial Park | \$4,000 | Local |
| 2018 | | | |
| Construct canopied accessible picnic tables | White City Park | \$2,000 | Local |
| Construct gazebo around portable toilets | White City Park | \$4,000 | Local |
| Repair picnic tables or replace with accessible canopied picnic tables | White City Park | \$4,000 | Local |
| Replace grills | White City Park | \$2,500 | Local |

* See **Table 7.1**

PART 7: FUNDING SOURCES

A number of possible sources of public funding for recreation projects within Houghton County are available, as shown in **Table 7.1**.

Table 7.1. Potential Funding Sources

| Description | Match* | Source |
|---|---------------|---------|
| County/Local Funds | N/A | Local |
| Community Foundation/Other (local service organizations and businesses) | N/A | Local |
| Michigan Natural Resources Trust Fund (NRTF) (\$15,000-\$300,000 grant for development projects) | 75/25 grant | DNR |
| Land & Water Conservation Fund (LWCF) (\$30,000-\$100,000 grant) | 50/50 grant | DNR |
| Boating Infrastructure Grants (BIG) | 75/25 grant | DNR |
| Waterways Program Grants | 50/50 grant** | DNR |
| Recreation Passport Grants (\$7,500-\$45,000 grant in 2014) | 75/25 grant | DNR |
| Off-Road Vehicle Trail Improvement Program | N/A | DNR |
| Snowmobile Trail Improvement Program | N/A | DNR |
| Recreational Trails Program | N/A | DNR |
| Law Enforcement Grants (Marine Safety, ORV, Snowmobile) | N/A | DNR |
| Coastal Zone Management (CZM) | 50/50 grant | DEQ |
| Michigan Department of Transportation (MDOT) | Varies | MDOT |
| United States Department of Agriculture – Rural Development (USDA-RD) | TBD | USDA |
| Miscellaneous Grants | N/A | Unknown |

* Local/non-local percentage

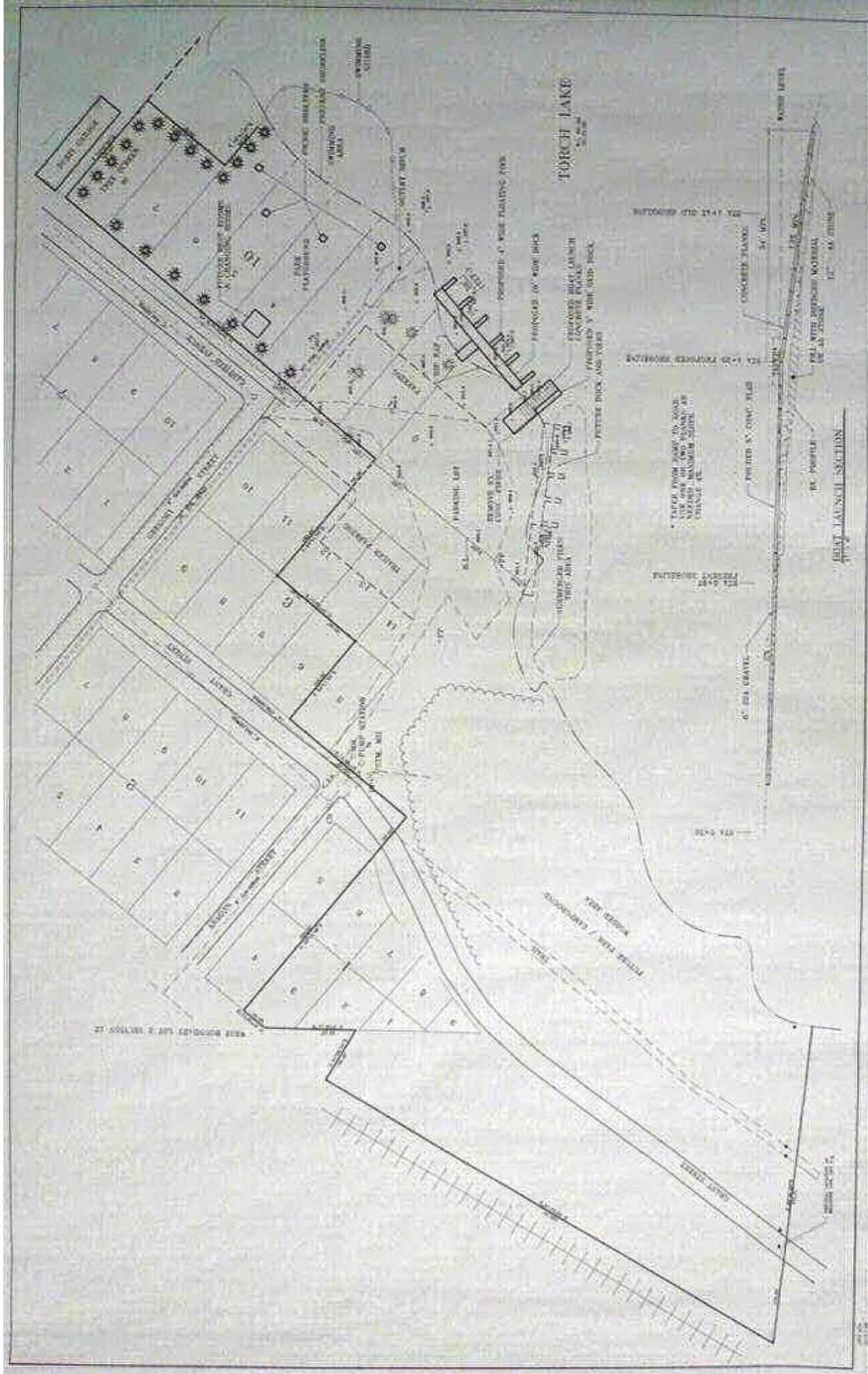
** 50/50 default with requests of under 50 percent state assistance considered favorably

APPENDIX

- A. "Ernie" Poisson Memorial Park Site Plan
- B. Survey Press Release
- C. Survey Print Copy
- D. Survey Results Summary
- E. Public Review Press Release
- F. Public Notice Affidavit
- G. Public Hearing Minutes
- H. Adoption Resolution

Appendix A:

"Ernie" Poisson Memorial Park Site Plan



| | | | | | |
|--|--|---------------------------|--|----------------|--|
| TORCH LAKE TOWNSHIP MUNICIPAL OFFICE - 303 MAIN ST. | | TORCH LAKE TOWNSHIP, PAOK | | PARK SITE PLAN | |
| TRAVELER ENGINEERING SERVICES, P.C. 10000 N. 10TH AVE., SUITE 100, DENVER, CO 80231 (303) 733-1100 | | TORCH LAKE TOWNSHIP, PAOK | | PARK SITE PLAN | |
| TORCH LAKE TOWNSHIP MUNICIPAL OFFICE - 303 MAIN ST. | | TORCH LAKE TOWNSHIP, PAOK | | PARK SITE PLAN | |

Appendix B:

Survey Press Release



Western Upper Peninsula Planning & Development Regional Commission

P.O. BOX 365, HOUGHTON, MICHIGAN 49931
906-482-7205 FAX 906-482-9032 ' E-MAIL: info@wuppdr.org

News Release

FOR IMMEDIATE RELEASE

Media Contact:
Jerald Wuorenmaa, Planner
906.482.7205, ext. 319
jwuorenmaa@wuppdr.org

January 3, 2014

Recreation Survey Available for Torch Lake Township

The Western Upper Peninsula Planning and Development Region (WUPPDR) is assisting Torch Lake Township in updating its five-year Recreation Plan.

Those who would like a voice in planning for improvements to Torch Lake Township recreation facilities over the next five years can take a brief survey. The survey will be available starting January 6 at www.wuppdr.org and www.torchlaketownship.com. Paper copies are available in the Hubbell Community Center, 52235 Duncan Avenue (M-26), Hubbell.

Responses to the Torch Lake Township Recreation Survey will be accepted until January 20, 2014. For further information, please contact Jerald Wuorenmaa at 906.482.7205, ext. 319 or jwuorenmaa@wuppdr.org.

###

Appendix C:
Survey Print Copy

Torch Lake Township Recreation Survey 2014

Torch Lake Township is seeking public input to help plan improvements to its public recreation sites from 2014 through 2018. Please complete this survey and return it by **January 20, 2014** to:

- **WUPPDR, 393 E. Lakeshore Drive, P.O. Box 365, Houghton, MI 49931**



1. Where is your **primary residence**?
 - Torch Lake Township Other: _____

2. Number of persons in your household by age: 0-5 ____ 6-12 ____ 13-19 ____ 20-39 ____ 40-64 ____ 65+ ____

3. Does anyone in your household have a disability or require special accommodations? Yes ____ No ____
If yes, please explain: _____

4. Does anyone in your household use or take part in any of the following? (Check **ALL** that apply).

| | | |
|--|---|--|
| <input type="radio"/> Archery | <input type="radio"/> Fishing – Lake Superior | <input type="radio"/> Skiing – cross-country |
| <input type="radio"/> ATV/ORV trails | <input type="radio"/> Golf | <input type="radio"/> Skiing – downhill |
| <input type="radio"/> Baseball fields | <input type="radio"/> Hiking | <input type="radio"/> Sledding |
| <input type="radio"/> Basketball courts | <input type="radio"/> Hockey | <input type="radio"/> Snowboarding |
| <input type="radio"/> Bicycling (mountain) | <input type="radio"/> Horseshoes | <input type="radio"/> Snowmobiling |
| <input type="radio"/> Bicycling (path/road) | <input type="radio"/> Hunting | <input type="radio"/> Snowshoeing |
| <input type="radio"/> Boating/canoeing/kayaking | <input type="radio"/> Ice skating | <input type="radio"/> Soccer |
| <input type="radio"/> Camping – campgrounds | <input type="radio"/> Picnicking | <input type="radio"/> Softball fields |
| <input type="radio"/> Camping – primitive | <input type="radio"/> Playgrounds | <input type="radio"/> Swimming |
| <input type="radio"/> Fishing – boat | <input type="radio"/> Running/jogging/walking | <input type="radio"/> Tennis courts |
| <input type="radio"/> Fishing – shore or wading | <input type="radio"/> Shooting | <input type="radio"/> Volleyball |
| <input type="radio"/> Other; please specify: _____ | | |

5. The following are park improvement projects that may be undertaken in the next five years. Please assign a level of priority for each potential project; **1** is **LOWEST PRIORITY** and **5** is **HIGHEST PRIORITY**. (This is not a ranking question – you may use the same number more than once for each facility. Leave blank if no opinion.)

"ERNIE" POISSON MEMORIAL PARK (Formerly Hubbell Park)

| | Lowest Priority | ←→ | Highest Priority | | | |
|--|-----------------|----|------------------|---|---|--|
| Add barbecue grills | 1 | 2 | 3 | 4 | 5 | |
| Improve parking | 1 | 2 | 3 | 4 | 5 | |
| Add/replace playground equipment | 1 | 2 | 3 | 4 | 5 | |
| Construct gazebo enclosure for portable toilets | 1 | 2 | 3 | 4 | 5 | |
| Install canopies over picnic tables | 1 | 2 | 3 | 4 | 5 | |
| Install irrigation system (pumped from Torch Lake) | 1 | 2 | 3 | 4 | 5 | |
| Install municipal water line for park use | 1 | 2 | 3 | 4 | 5 | |
| Improve accessibility to pavilion (with walkway) | 1 | 2 | 3 | 4 | 5 | |
| Construct and install benches on docks | 1 | 2 | 3 | 4 | 5 | |
| Block vehicle access to beach area | 1 | 2 | 3 | 4 | 5 | |
| Obtain and install new park sign | 1 | 2 | 3 | 4 | 5 | |
| Reinforce and maintain dock | 1 | 2 | 3 | 4 | 5 | |

"ERNIE" POISSON MEMORIAL PARK (CONTINUED)

Lowest Priority ←————→ Highest Priority

Other: _____ 1 2 3 4 5

WHITE CITY PARK
(Located in Jacobsville at South Entry of Portage Waterway)

Lowest Priority ←————→ Highest Priority

Improve parking 1 2 3 4 5

Replace swings and add playground equipment 1 2 3 4 5

Construct gazebo enclosures for portable toilets 1 2 3 4 5

Replace barbecue grills 1 2 3 4 5

Add general advisory signage 1 2 3 4 5

Repair concrete launch pads and timber crib dock 1 2 3 4 5

Repair or replace picnic tables and add canopies 1 2 3 4 5

Other: _____ 1 2 3 4 5

6. How many days per year do you or someone in your household use each of the township recreation facilities?

| Location & Facility | Less than 1 | 1 to 5 | 6 to 20 | Over 20 |
|-------------------------------|-----------------------|-----------------------|-----------------------|-----------------------|
| "Ernie" Poisson Memorial Park | <input type="radio"/> | <input type="radio"/> | <input type="radio"/> | <input type="radio"/> |
| White City Park | <input type="radio"/> | <input type="radio"/> | <input type="radio"/> | <input type="radio"/> |

7. **Additional Comments:**

Thank you for your input!

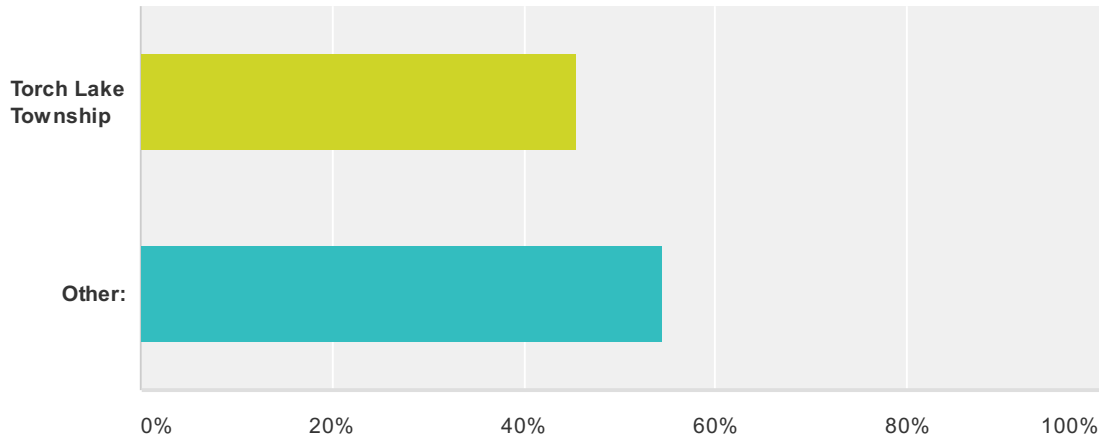
Survey results will be included in the draft 2014-2018 Torch Lake Township Recreation Plan, which will be available for a one-month public review period starting shortly after the conclusion of this survey. Public notice will be given at the appropriate time.

Appendix D:

Survey Results Summary

Q1 Where is your primary residence?

Answered: 11 Skipped: 0

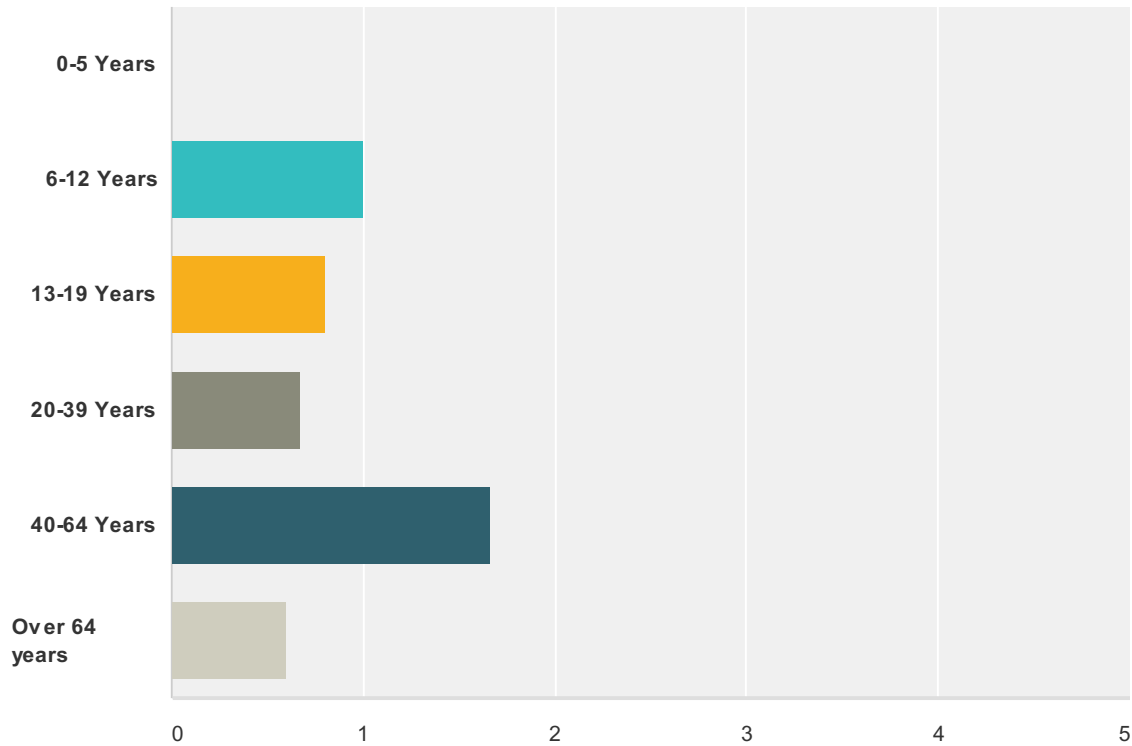


| Answer Choices | Responses |
|---------------------|-----------|
| Torch Lake Township | 45.45% 5 |
| Other: | 54.55% 6 |
| Total | 11 |

| # | Other: | Date |
|---|----------------------|--------------------|
| 1 | Schoolcraft Township | 1/17/2014 3:29 PM |
| 2 | Sherman Township | 1/14/2014 12:54 PM |
| 3 | Adams Twp | 1/14/2014 9:30 AM |
| 4 | Osceola Twp | 1/14/2014 9:15 AM |
| 5 | hancock | 1/14/2014 9:12 AM |
| 6 | Chassell | 1/7/2014 4:52 PM |

Q2 What is the number of persons in your household by age?

Answered: 11 Skipped: 0



| Answer Choices | Average Number | Total Number | Responses |
|------------------------------|----------------|--------------|-----------|
| 0-5 Years | 0 | 0 | 2 |
| 6-12 Years | 1 | 2 | 2 |
| 13-19 Years | 1 | 4 | 5 |
| 20-39 Years | 1 | 2 | 3 |
| 40-64 Years | 2 | 15 | 9 |
| Over 64 years | 1 | 3 | 5 |
| Total Respondents: 11 | | | |

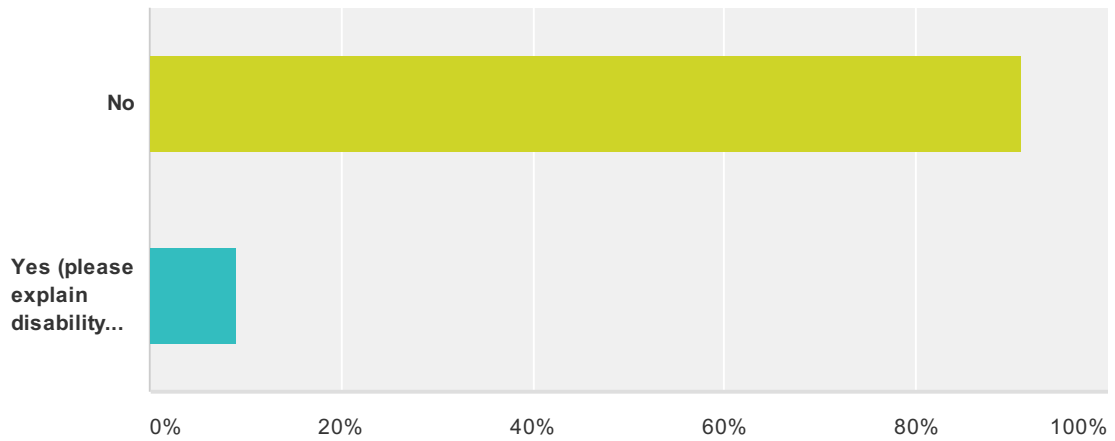
| # | 0-5 Years | Date |
|---|-------------|-------------------|
| 1 | 0 | 1/14/2014 9:15 AM |
| 2 | 0 | 1/7/2014 5:33 PM |
| # | 6-12 Years | Date |
| 1 | 0 | 1/14/2014 9:15 AM |
| 2 | 2 | 1/7/2014 5:33 PM |
| # | 13-19 Years | Date |
| 1 | 0 | 1/14/2014 9:15 AM |
| 2 | 1 | 1/13/2014 2:51 PM |

Torch Lake Township Recreation Survey 2014

| | | |
|----------|----------------------|--------------------|
| 3 | 1 | 1/11/2014 2:30 PM |
| 4 | 0 | 1/7/2014 5:33 PM |
| 5 | 2 | 1/7/2014 3:17 PM |
| # | 20-39 Years | Date |
| 1 | 2 | 1/17/2014 3:29 PM |
| 2 | 0 | 1/14/2014 9:15 AM |
| 3 | 0 | 1/7/2014 5:33 PM |
| # | 40-64 Years | Date |
| 1 | 2 | 1/17/2014 3:38 PM |
| 2 | 2 | 1/17/2014 3:29 PM |
| 3 | 2 | 1/14/2014 12:54 PM |
| 4 | 1 | 1/14/2014 9:15 AM |
| 5 | 1 | 1/14/2014 9:12 AM |
| 6 | 2 | 1/13/2014 2:51 PM |
| 7 | 1 | 1/11/2014 2:30 PM |
| 8 | 2 | 1/7/2014 5:33 PM |
| 9 | 2 | 1/7/2014 3:17 PM |
| # | Over 64 years | Date |
| 1 | 1 | 1/14/2014 9:30 AM |
| 2 | 0 | 1/14/2014 9:15 AM |
| 3 | 1 | 1/14/2014 9:12 AM |
| 4 | 0 | 1/7/2014 5:33 PM |
| 5 | 1 | 1/7/2014 4:52 PM |

Q3 Does anyone in your household have a disability or require special accommodations?

Answered: 11 Skipped: 0

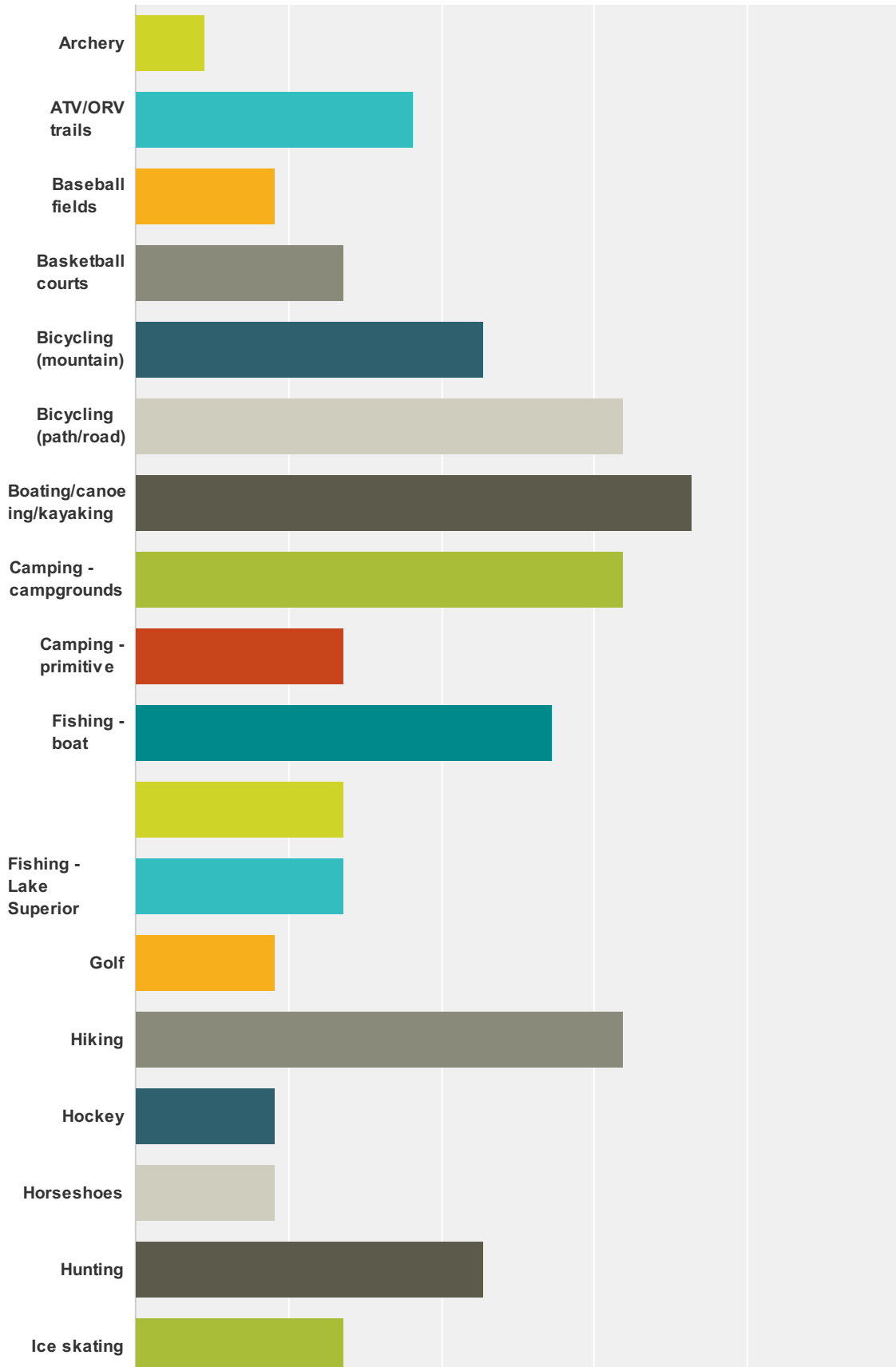


| Answer Choices | Responses |
|---|-----------|
| No | 90.91% 10 |
| Yes (please explain disability and/or accommodation[s] needed): | 9.09% 1 |
| Total | 11 |

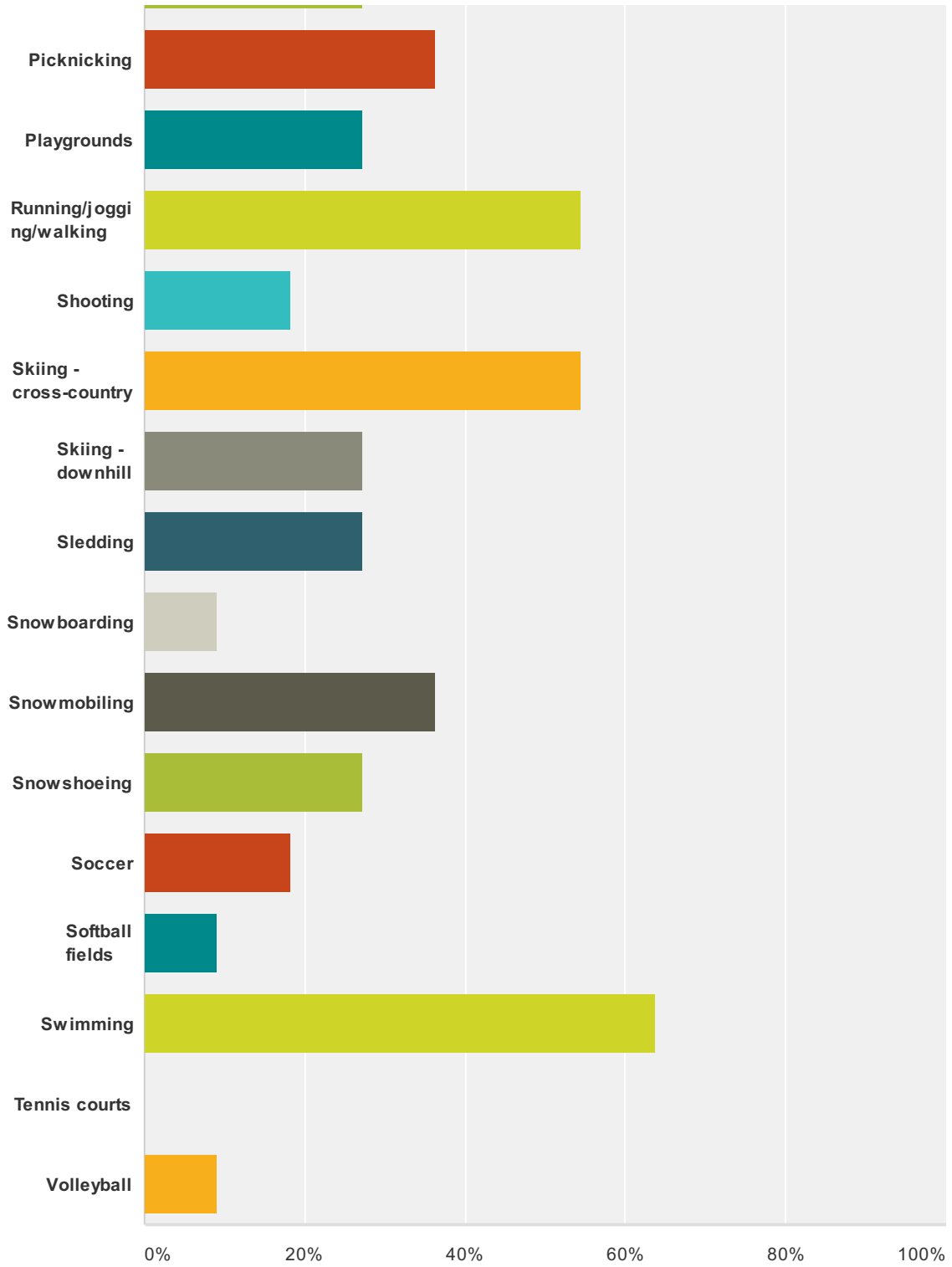
| # | Yes (please explain disability and/or accommodation[s] needed): | Date |
|---|---|------------------|
| 1 | Balance problem | 1/7/2014 4:52 PM |

Q4 What recreational activities, if any, do you or other members of your household take part in?

Answered: 11 Skipped: 0



Torch Lake Township Recreation Survey 2014



| Answer Choices | Responses |
|----------------------|-----------|
| Archery | 9.09% 1 |
| ATV/ORV trails | 36.36% 4 |
| Baseball fields | 18.18% 2 |
| Basketball courts | 27.27% 3 |
| Bicycling (mountain) | 45.45% 5 |

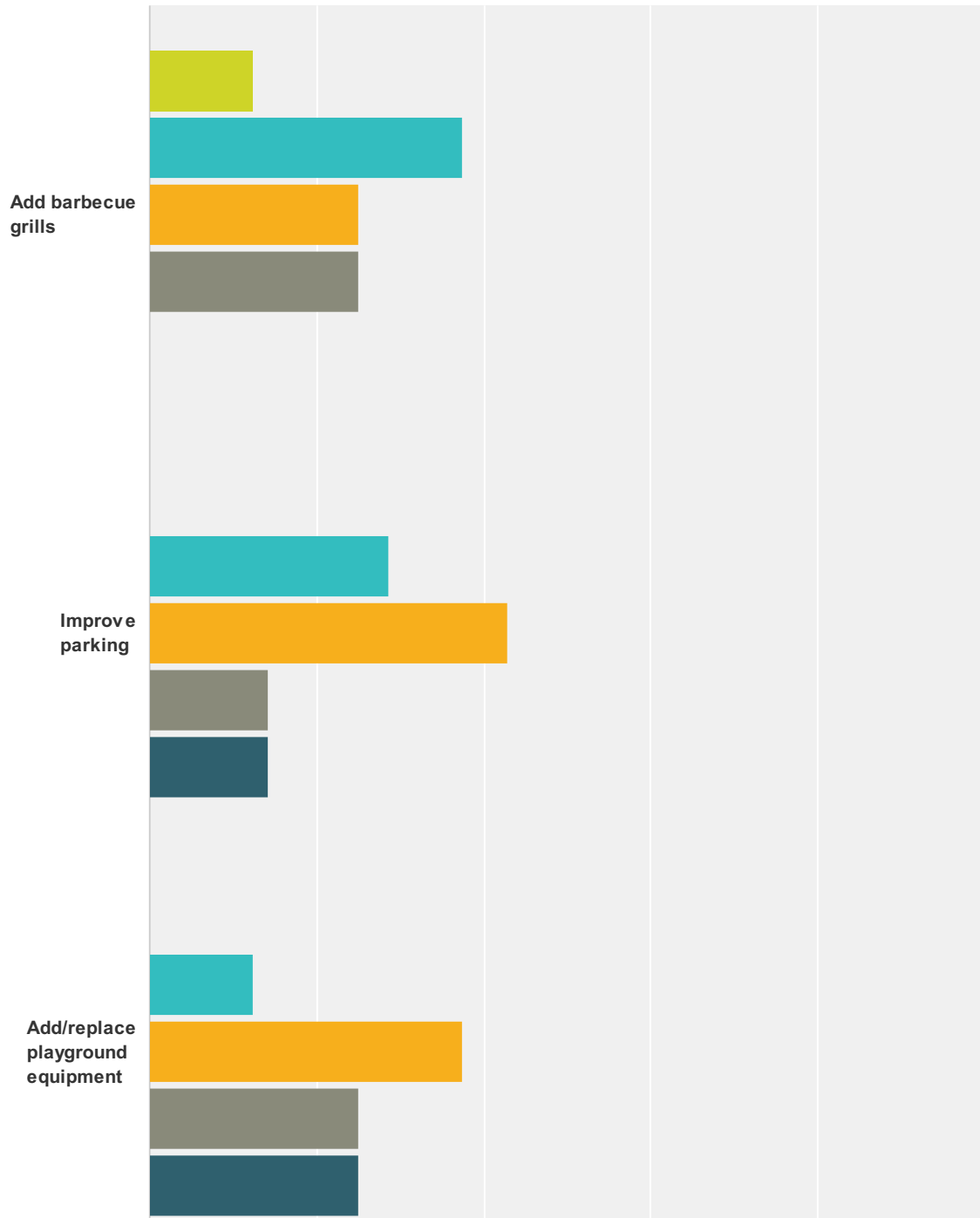
Torch Lake Township Recreation Survey 2014

| | | |
|------------------------------|--------|---|
| Bicycling (path/road) | 63.64% | 7 |
| Boating/canoeing/kayaking | 72.73% | 8 |
| Camping - campgrounds | 63.64% | 7 |
| Camping - primitive | 27.27% | 3 |
| Fishing - boat | 54.55% | 6 |
| Fishing - shore or wading | 27.27% | 3 |
| Fishing - Lake Superior | 27.27% | 3 |
| Golf | 18.18% | 2 |
| Hiking | 63.64% | 7 |
| Hockey | 18.18% | 2 |
| Horseshoes | 18.18% | 2 |
| Hunting | 45.45% | 5 |
| Ice skating | 27.27% | 3 |
| Picknicking | 36.36% | 4 |
| Playgrounds | 27.27% | 3 |
| Running/jogging/walking | 54.55% | 6 |
| Shooting | 18.18% | 2 |
| Skiing - cross-country | 54.55% | 6 |
| Skiing - downhill | 27.27% | 3 |
| Sledding | 27.27% | 3 |
| Snowboarding | 9.09% | 1 |
| Snowmobiling | 36.36% | 4 |
| Snowshoeing | 27.27% | 3 |
| Soccer | 18.18% | 2 |
| Softball fields | 9.09% | 1 |
| Swimming | 63.64% | 7 |
| Tennis courts | 0% | 0 |
| Volleyball | 9.09% | 1 |
| Total Respondents: 11 | | |

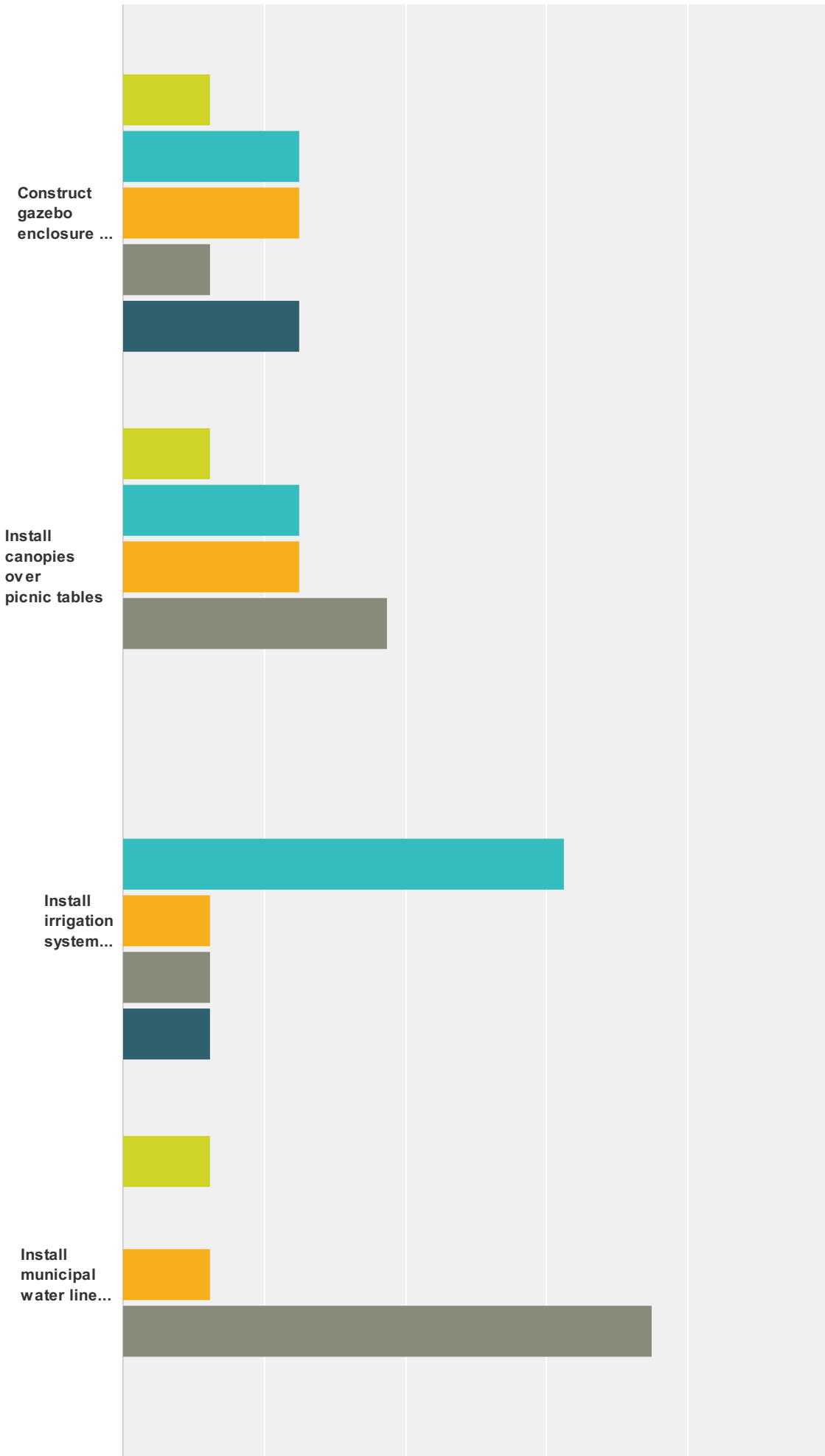
| # | Other: | Date |
|---|-------------------------|------|
| | There are no responses. | |

Q5 The following are improvements to "ERNIE" POISSON MEMORIAL PARK (formerly Hubbell Park) that may be undertaken in the next five years. Please assign a level of priority for each potential project; 1 is LOWEST PRIORITY and 5 is HIGHEST PRIORITY. (This is not a ranking question – you may use the same number more than once for each facility. Leave blank if no opinion.)

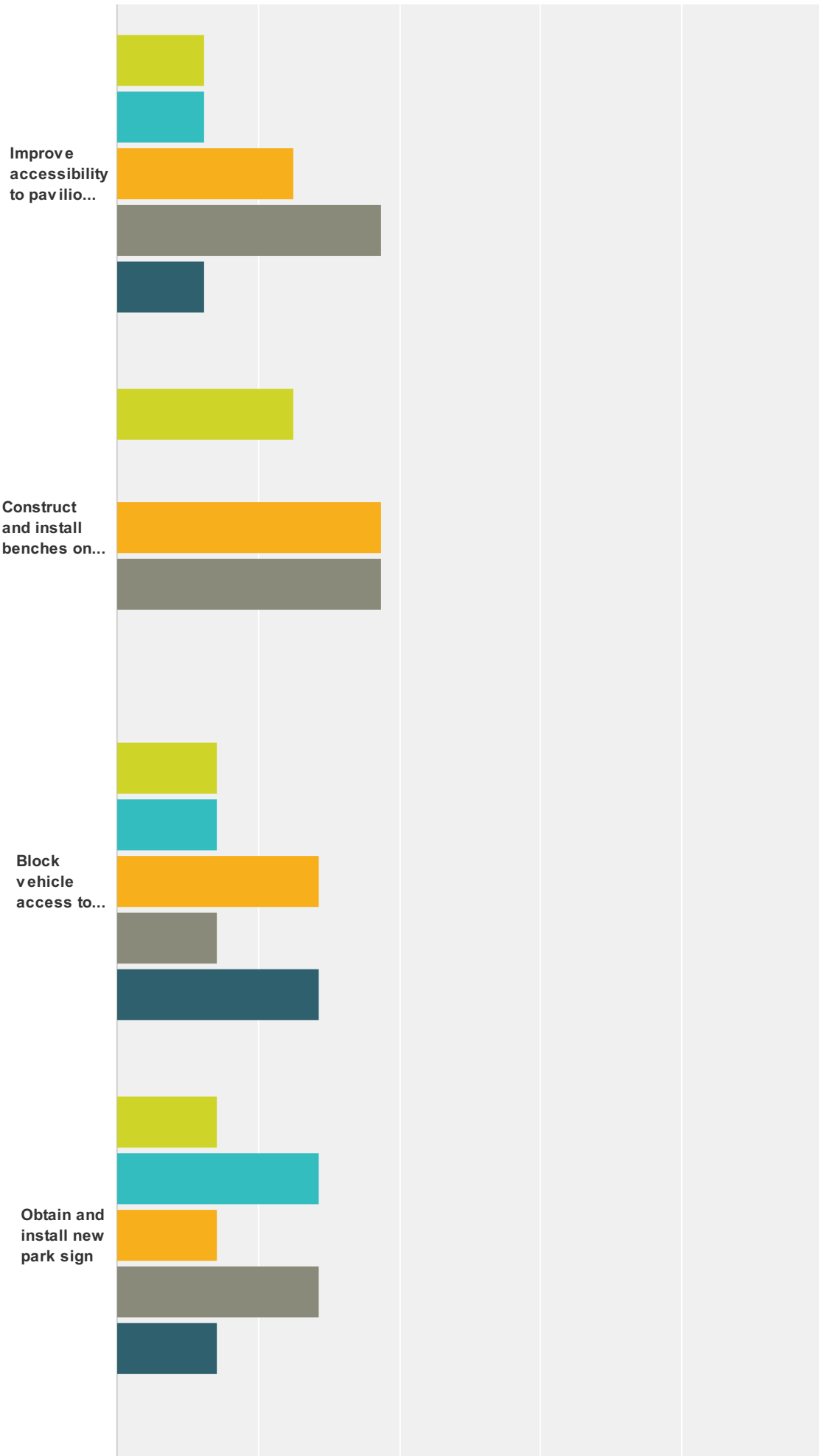
Answered: 8 Skipped: 3



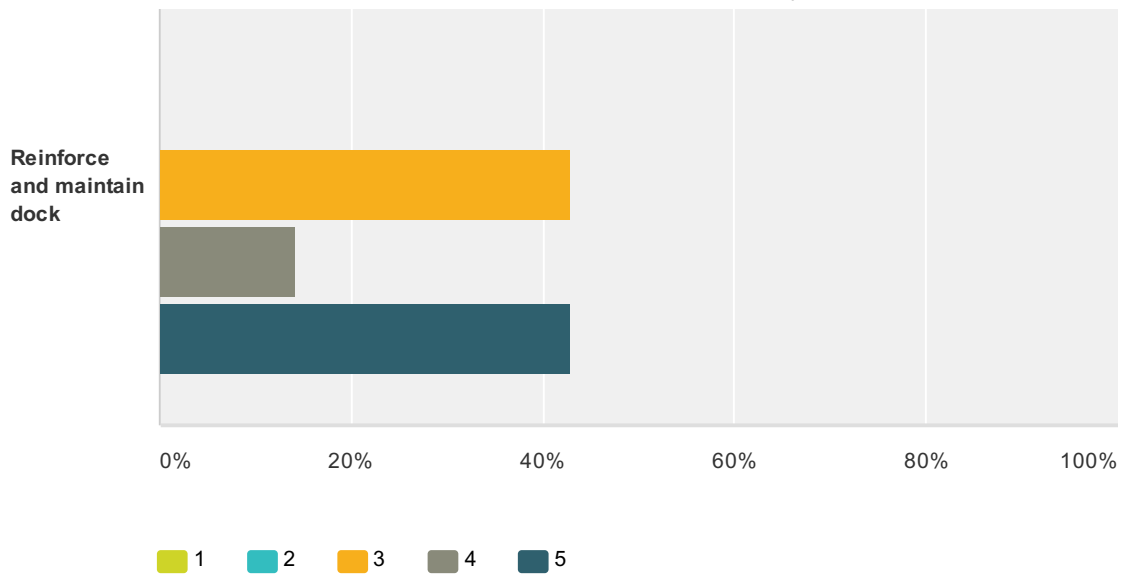
Torch Lake Township Recreation Survey 2014



Torch Lake Township Recreation Survey 2014



Torch Lake Township Recreation Survey 2014

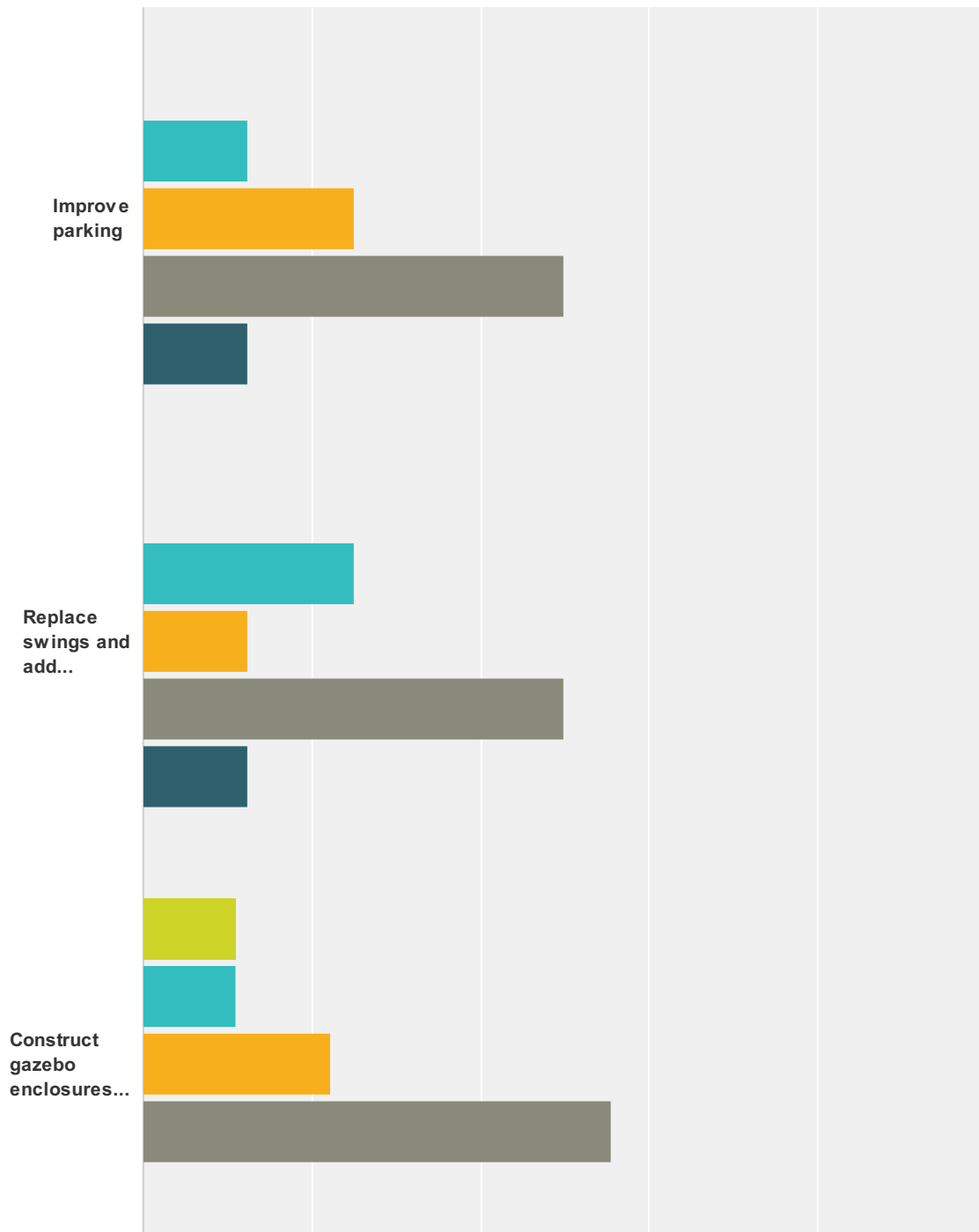


| | 1 | 2 | 3 | 4 | 5 | Total |
|--|-------------|-------------|-------------|-------------|-------------|-------|
| Add barbecue grills | 12.50% 1 | 37.50% 3 | 25% 2 | 25% 2 | 0% 0 | 8 |
| Improve parking | 0% 0 | 28.57% 2 | 42.86% 3 | 14.29% 1 | 14.29% 1 | 7 |
| Add/replace playground equipment | 0% 0 | 12.50% 1 | 37.50% 3 | 25% 2 | 25% 2 | 8 |
| Construct gazebo enclosure for portable toilets | 12.50% 1 | 25% 2 | 25% 2 | 12.50% 1 | 25% 2 | 8 |
| Install canopies over picnic tables | 12.50% 1 | 25% 2 | 25% 2 | 37.50% 3 | 0% 0 | 8 |
| Install irrigation system (pumped from Torch Lake) | 0% 0 | 62.50% 5 | 12.50% 1 | 12.50% 1 | 12.50% 1 | 8 |
| Install municipal water line for park use | 12.50% 1 | 0% 0 | 12.50% 1 | 75% 6 | 0% 0 | 8 |
| Improve accessibility to pavilion (with walkway) | 12.50% 1 | 12.50% 1 | 25% 2 | 37.50% 3 | 12.50% 1 | 8 |
| Construct and install benches on docks | 25% 2 | 0% 0 | 37.50% 3 | 37.50% 3 | 0% 0 | 8 |
| Block vehicle access to beach area | 14.29% 1 | 14.29% 1 | 28.57% 2 | 14.29% 1 | 28.57% 2 | 7 |
| Obtain and install new park sign | 14.29% 1 | 28.57% 2 | 14.29% 1 | 28.57% 2 | 14.29% 1 | 7 |
| Reinforce and maintain dock | 0% 0 | 0% 0 | 42.86% 3 | 14.29% 1 | 42.86% 3 | 7 |

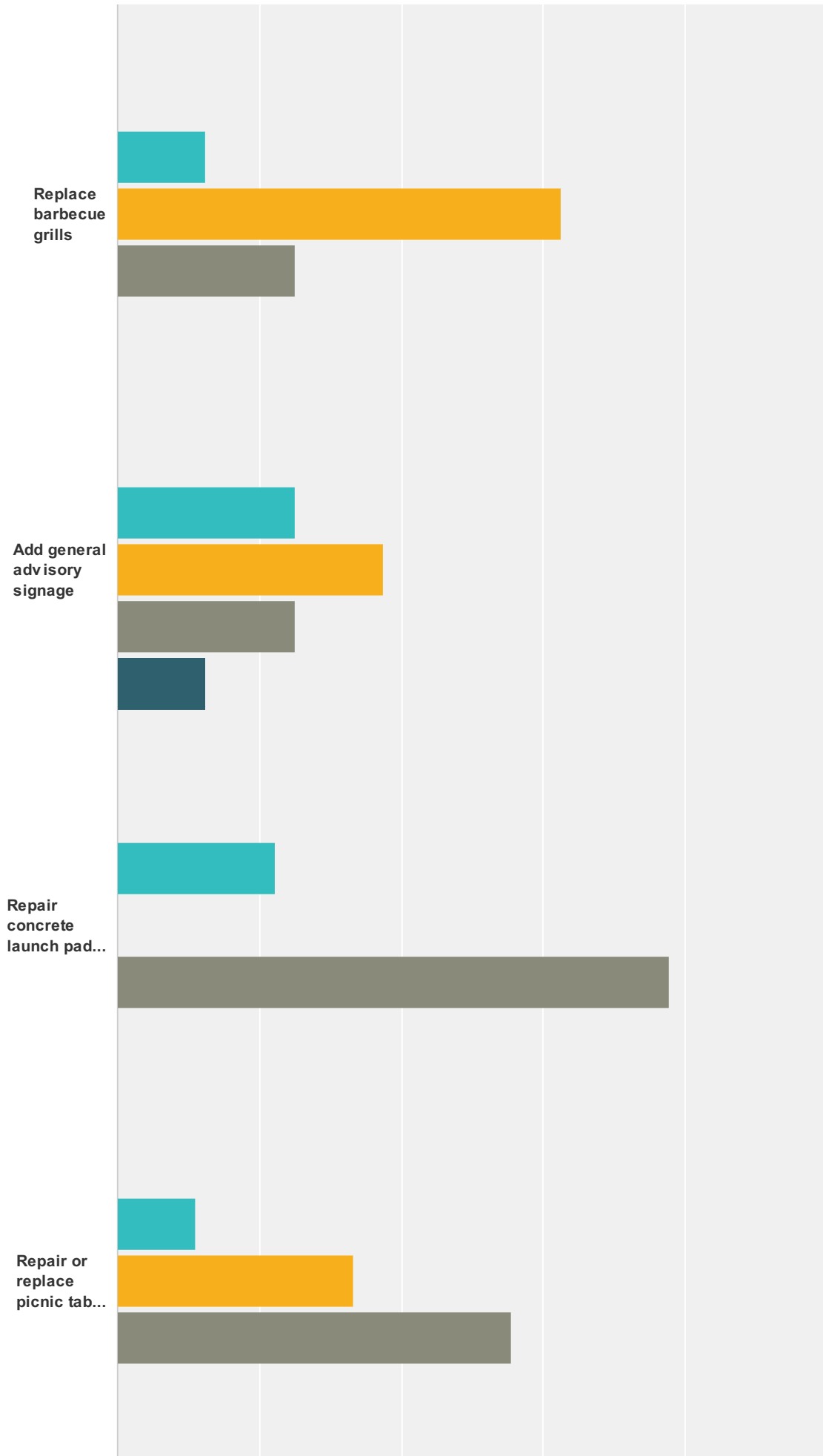
| # | Other (please specify) | Date |
|---|--|------------------|
| 1 | Dredge/clean silt from boat ramp, Improve turf/lawn, Improve playground and open space, Define parking/limit lawn access, screen unsightly utility infrastructure, | 1/7/2014 3:28 PM |

Q6 The following are improvements to WHITE CITY PARK (in Jacobsville at the South Entry of the Portage Waterway) that may be undertaken in the next five years. Please assign a level of priority for each potential project; 1 is LOWEST PRIORITY and 5 is HIGHEST PRIORITY. (This is not a ranking question – you may use the same number more than once for each facility. Leave blank if no opinion.)

Answered: 9 Skipped: 2



Torch Lake Township Recreation Survey 2014



Torch Lake Township Recreation Survey 2014

0% 20% 40% 60% 80% 100%

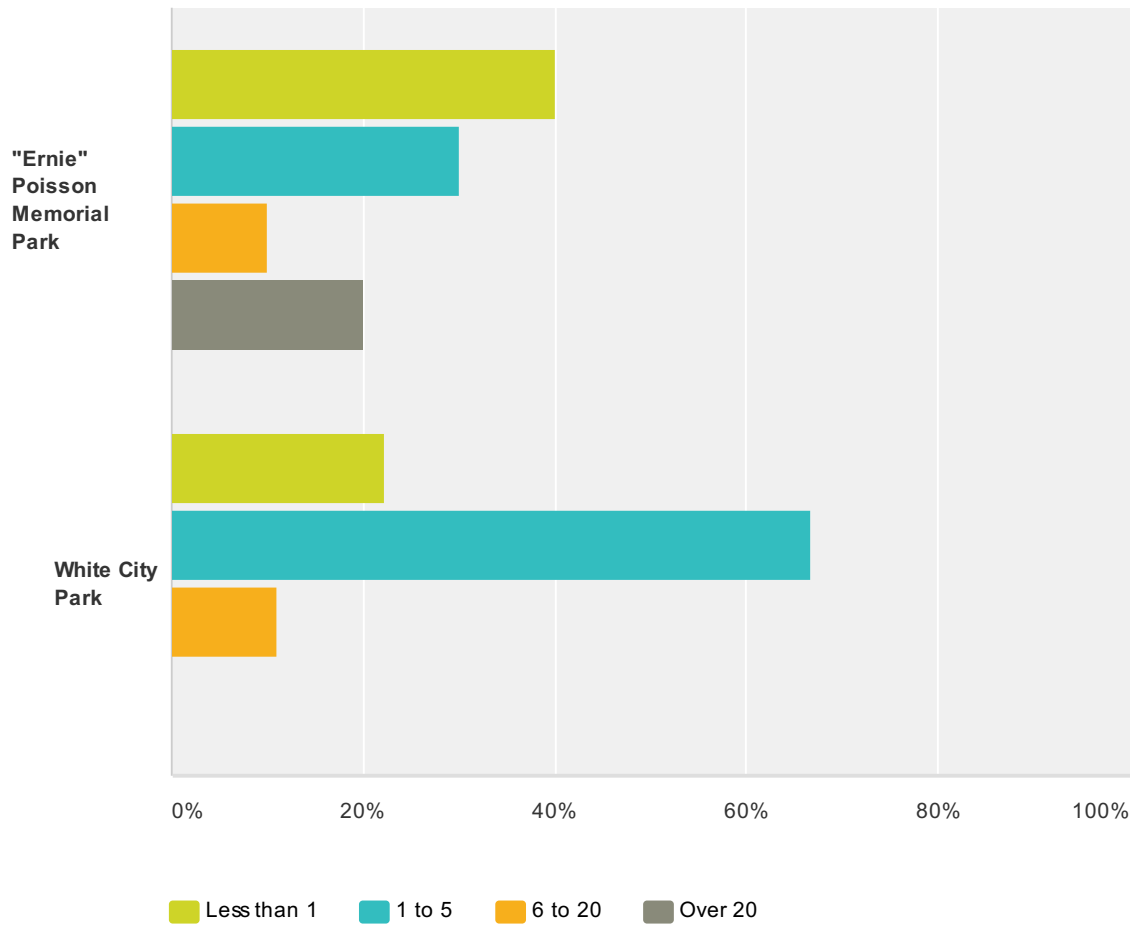
1
 2
 3
 4
 5

| | 1 | 2 | 3 | 4 | 5 | Total |
|--|-------------|-------------|-------------|-------------|-------------|-------|
| Improve parking | 0% 0 | 12.50% 1 | 25% 2 | 50% 4 | 12.50% 1 | 8 |
| Replace swings and add playground equipment | 0% 0 | 25% 2 | 12.50% 1 | 50% 4 | 12.50% 1 | 8 |
| Construct gazebo enclosures for portable toilets | 11.11% 1 | 11.11% 1 | 22.22% 2 | 55.56% 5 | 0% 0 | 9 |
| Replace barbecue grills | 0% 0 | 12.50% 1 | 62.50% 5 | 25% 2 | 0% 0 | 8 |
| Add general advisory signage | 0% 0 | 25% 2 | 37.50% 3 | 25% 2 | 12.50% 1 | 8 |
| Repair concrete launch pads and timber crib dock | 0% 0 | 22.22% 2 | 0% 0 | 77.78% 7 | 0% 0 | 9 |
| Repair or replace picnic tables and add canopies | 0% 0 | 11.11% 1 | 33.33% 3 | 55.56% 5 | 0% 0 | 9 |

| # | Other (please specify) | Date |
|---|---|------------------|
| 1 | Define parking area/limit off road access; Provide accessible grills and picnic areas - no canopies!; Remove broken/damaged vegetation | 1/7/2014 3:28 PM |

Q7 How many days per year do you or someone in your household use each of the township recreation facilities?

Answered: 10 Skipped: 1



| | Less than 1 | 1 to 5 | 6 to 20 | Over 20 | Total |
|-------------------------------|-------------|-------------|-------------|----------|-------|
| "Ernie" Poisson Memorial Park | 40% 4 | 30% 3 | 10% 1 | 20% 2 | 10 |
| White City Park | 22.22% 2 | 66.67% 6 | 11.11% 1 | 0% 0 | 9 |

Q8 Additional Comments:

Answered: 1 Skipped: 10

| # | Responses | Date |
|---|---|------------------|
| 1 | Prioritize improvements to Poisson Memorial Park due to proximity to larger population and higher use; Develop a long term plan for improvements before implementing piecemeal; Interview kids as users to help guide investment - not just adults. | 1/7/2014 3:30 PM |

Appendix E:

Public Review Press Release



Western Upper Peninsula Planning & Development Regional Commission

P.O. BOX 365, HOUGHTON, MICHIGAN 49931
906-482-7205 FAX 906-482-9032 ' E-MAIL: info@wuppdr.org

News Release

FOR IMMEDIATE RELEASE

Media Contact:
Jerald Wuorenmaa, Planner
906.482.7205, ext. 319
jwuorenmaa@wuppdr.org

January 23, 2014

Torch Lake Township Recreation Plan Available for Review

The Western Upper Peninsula Planning and Development Region (WUPPDR) recently completed updates to the Torch Lake Township five-year Recreation Plan for 2014-2018.

The draft of the 2014-2018 Recreation Plan will become available on Friday, January 24, 2014 for public review and comment prior to the plan's adoption. The plan draft will be available for viewing online at www.wuppdr.org. A printed copy will be available for review at the Hubbell Post Office.

Comments must be made in writing to: WUPPDR, 393 E. Lakeshore Drive, P.O. Box 365, Houghton, MI 49931; or to Jerald Wuorenmaa, Planner, at jwuorenmaa@wuppdr.org. All comments must be received by WUPPDR by February 25, 2014 in order to be considered.

A final opportunity for public comment will be offered at a special meeting of the Torch Lake Township Board on February 26 at 6:00 pm, at the Hubbell Community Building, when a vote on adoption of the plan will occur.

###

Appendix F:

Public Notice Affidavit

AFFIDAVIT OF PUBLICATION

IN THE MATTER OF PUBLIC HEARING NOTICE TORCH LAKE TOWNSHIP 2014-2018 RECREATION PLAN

STATE OF MICHIGAN

COUNTY OF HOUGHTON SS

YVONNE ROBILLARD

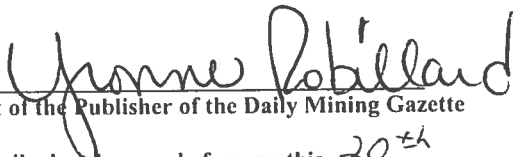
Being first duly sworn, says that he/she is the agent of the Publisher of The Daily Mining Gazette, a newspaper published in the English language for the dissemination of local or transmitted news and intelligence of a general character and legal news, which is a duly qualified newspaper, and that annexed hereto is a copy of a certain order taken from said newspaper in which the order was published on the following dates:

FEBRUARY 18, 2014

PUBLIC HEARING NOTICE

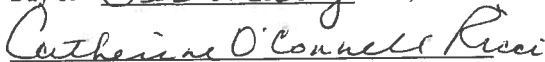
The Torch Lake Township Board will hold a special meeting and public hearing on Wednesday, February 26, 2014 in the Hubbell Community Center, located at 52235 Duncan Avenue, Hubbell, beginning at 6:00 pm. The purpose of the hearing is to receive final public comment regarding the Torch Lake Township 2014-2018 Recreation Plan prior to a vote for adoption of the plan. Written comments may be submitted to WUPPDR, P.O. Box 365, Houghton, MI 49931 or to jwuorenmaa@wuppdr.org by February 25, 2014. Until February 25, the plan draft is available for review in the Hubbell Community Center during business hours and online at www.wuppdr.org.

Brian Cadwell, Supervisor
Torch Lake Township Board


Agent of the Publisher of the Daily Mining Gazette

Subscribed and sworn before me this 20th

Day of February A.D., 2014


Notary Public, Houghton County, Michigan

Acting in and for the County of Houghton Michigan

CATHERINE O'CONNELL RICCI
NOTARY PUBLIC, STATE OF MI
COUNTY OF HOUGHTON
MY COMMISSION EXPIRES Aug 10, 2018
ACTING IN COUNTY OF Houghton

Appendix G:

Public Hearing Minutes

Torch Lake Township
Special Meeting
Hubbell Community Building
February 26, 2014

The Special Meeting of the Torch Lake Township Board was called to order by Supervisor, Brian Cadwell at 6:00 p.m.

The meeting opened with the Pledge of Allegiance.

Roll call vote: Sapino, Cadwell, Foreman and Isola present. Zurcher, absent.

Purpose of the special meeting is to receive comment on the proposed Torch Lake Township Recreation Plan for 2014-2018. The draft currently on file.

Request for public comment made by Supervisor, Cadwell. No public comment made.

Motion by Cadwell, seconded by Foreman to adopt The Torch Lake Township Recreation Plan for 2014-2018. Roll call vote: Foreman, yes; Sapino, yes; Cadwell, yes; and Isola, yes. Motion carried.

Motion by Foreman and seconded by Sapino to adjourn the meeting. Motion carried.

Meeting adjourned at 6:12 p. m.

Respectfully submitted

Mary Isola,
Torch Lake Township Clerk

Appendix H:

Adoption Resolution

Brian Cadwell, Supervisor
Karen Rovano, Clerk
Diane Zurcher, Treasurer
Brian Foreman, Trustee
Scott Sapino, Trustee



52235 Duncan Avenue
P.O. Box 429
Hubbell, MI 49934
Phone: (906) 296-0214
Fax: (906) 296-0214

TORCH LAKE TOWNSHIP BOARD

**A RESOLUTION TO ADOPT THE
TORCH LAKE TOWNSHIP RECREATION PLAN 2014-2018**

WHEREAS, the Torch Lake Township Board has undertaken a planning process to determine the recreation and natural resource conservation needs and desires of its residents during a five-year period covering the years 2014 through 2018, and

WHEREAS, Torch Lake Township began the process of developing a recreation plan in accordance with the most recent guidelines developed by the Department of Natural Resources and made available to local communities, and

WHEREAS, residents of Torch Lake Township were provided with a well-advertised opportunity during the development of the draft plan to express opinions, ask questions, and discuss all aspects of the recreation plan, and

WHEREAS, the public was given a well-advertised opportunity and reasonable accommodations to review the final draft plan for a period of one month, and

WHEREAS, a final public meeting was held on February 26, 2014 at the Hubbell Community Center to allow all residents of the planning area to express opinions, ask questions, and discuss all aspects of the recreation plan, and

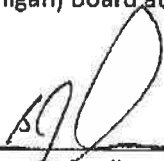
WHEREAS, Torch Lake Township has developed the plan as a guideline for improving and enhancing recreation for Torch Lake Township, and

WHEREAS, following the public meeting, the Torch Lake Township Board voted to adopt said recreation plan.

NOW, THEREFORE BE IT RESOLVED the Torch Lake Township Board hereby adopts the Torch Lake Township Recreation Plan 2014-2018.

Yeas: 4 Nays: 0 Absent: ZURCHER

I, Brian Cadwell, Township Supervisor, do hereby certify that the foregoing is a true and original copy of a resolution adopted by the Torch Lake Township (Michigan) Board at a special meeting thereof held on February 26, 2014.



Brian Cadwell, Supervisor